

PRODUCT CATALOGUE



INNOVATIVE TECHNOLOGY for every SEASON



FIEDLER®



Development



Manufacturing



Painting



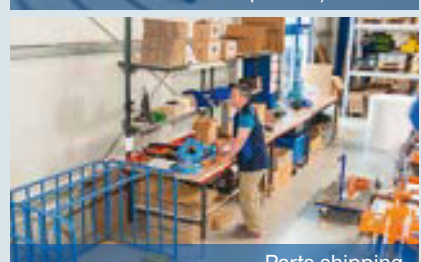
Electronics assembly



Final assembly



Final inspection/test run



Parts shipping

FIEDLER – PROVEN WORLDWIDE

The **FIEDLER**® Maschinenbau und Technikvertrieb GmbH [Engineering & Technology Distribution] was founded in 1990.

We are a family owned and managed company distinguished by high flexibility and short decision paths.

The **FIEDLER**® brand stands not only for innovative technologies, excellent quality and comprehensive service, but also for internationality.

Our products in the fields of mowing and summer maintenance, watering and washing or cleaning, foliage, waste and weed removal, and winter maintenance provide all you need for performing your specific tasks.

Our devices are based on the latest technologies and are distinguished by their very high efficiency.

The proximity to the user provides us new impetus. This is why we can keep improving our **FIEDLER**®-products so that they are always optimally tailored to our customers and their work.

Many years of experience and continuous quality control guarantee the high quality and durability of our products.

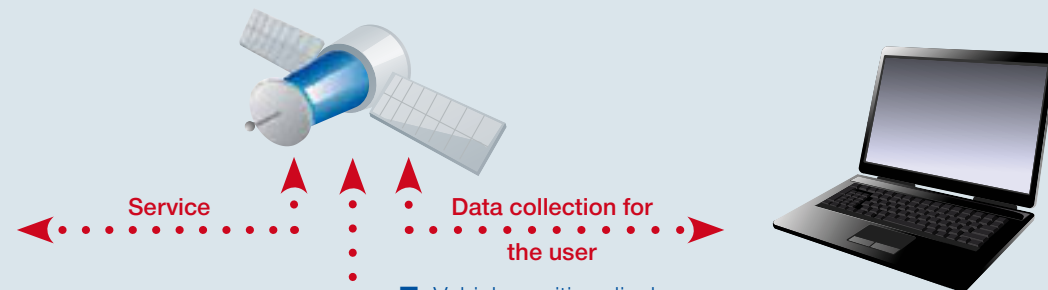
Your **FIEDLER**® Team

FIEDLER® Multimatic-Control FMC FIEDLER® Easy-Control FEC

The **FIEDLER**® Multimatic Control FMC and the **FIEDLER**® Easy-Control FEC stand for trendsetting control and information panels, with which all current and new **FIEDLER**® attachments and mounted devices can be operated. These functions are entirely based on CAN-BUS and allow for both data collection and remote maintenance. Our control panels automatically recognize the attachment connected and start the necessary software operations to run the user interface.



FIEDLER® Service Centre



- Any malfunction on any device can be eliminated and a diagnosis performed by using the remote maintenance program.
- The operator always uses the same familiar control panel for all devices.

- Vehicle position displays
- Recording of all works performed, ensuring a meticulous evaluation of what, when, where and how it has been done.
- Data can be analyzed by means of software.
- Optimizing equipment use planning possible.
- Capturing all costs, planning for the following year.
- Detailed overview on the utilization of individual attachments and the time of the year it was used.



Wedge snowplough FKP
1310/1510/1710/1910



Snowplough
FRS 1404 – 2404



Brine spraying system
FSSA 500 – 15000



Washing bar
FSB 1300 – 2400



Rear mounted spreader FSH
30/30T/FWS 350/FWS 200



Flat silo spreader
FSS 300 – 2000



Weed brush
FWK 900



Watering arm
FGA 500 – 1200



Hedge trimmer
FH 1500



Front extension arm
FFA 400 M-K/P



Front extension arm
FFA 500/600/700



Front extension arm
FFA 300





Front rotary mower FFS 1500 | 1800



Cut and collect system FMSK 1800 M

Suitable for mowing grass with simultaneous collecting on sports fields, airports, green areas in towns and cities, parks, industrial sites, etc.



- 1.80m of cutting width
- 2.20 / 3.00 / 3.50m³ of container volume
- Hydraulically opening rear door
- Without via Multicar tipping hydraulics, no removing of the collection tube



Front extension arm FFA 300



- 2.95m of max. reach with flail mower head
- Swivels left/right
- 1.25m of lateral displacement

Front extension arm FFA 400 M-K | -P



- 4.00m / 3.65m of max. reach with the flail mower head
- Right hand / left hand working possible by swivelling
- 1.25m of lateral displacement

Front extension arm FFA 500 | FFA 700



- 1.25m Flail mower head
- 5.00m / 7.00m of reach and 1.65m of lateral displacement
- Swivels left/right hydraulically



A quick-change system allows for a 180° rotation and the easy change of the work tools in minutes by one person only.

Front extension arm FFA 500 with a tunnel washing brush



Front extension arm FFA 400 with an integrated oil supply



- 4.00m of max. reach with flail mower head
- Right hand / left hand working possible by swivelling
- Powerd via the front-mounted PTO



Flail mower head



Flat-flail mower head



Hedge trimmer



Branch cutter



Ground auger



Trench digger



Weed brush



Washing brush



Stump grinder



Front flail mower FF 1002

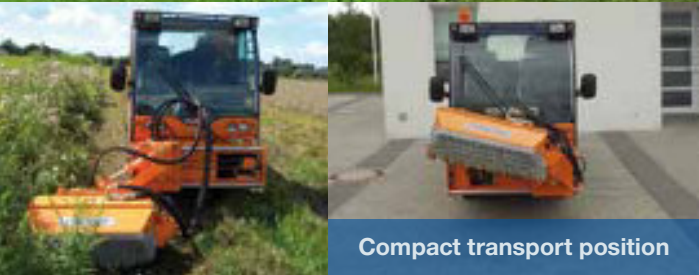
Particularly suitable for
mowing roadsides

- 1,00m of working width
- Swivel angle -35° to 40°
- Safe mulching head (double stone guard, plastic baffles and chain protection in front of the Y-blades)
- Easy handling
- Permanent protection against collision



Compact transport position

- 0.80m of lateral displacement via the chain drive
- 0.80m / 1.00m of mower head width
- 2.80m max. of reach left/right from the vehicle's centre point
- Permanent protection against collision
- Hydraulic ground discharge
- Option: additional lateral displacement



Compact transport position

Front flail mower FF 1000

Designed for mowing grass and vegetation in parks,
on roadsides and embankments



Front flail mower FF 1003

- 1.60m of working width
- Hammer or Y-blade
- Option: additional lateral displacement



Designed for
mowing grass
and vegetation
on large surfaces

Watering arm FGA 500 | 700 | 1000 | 1200

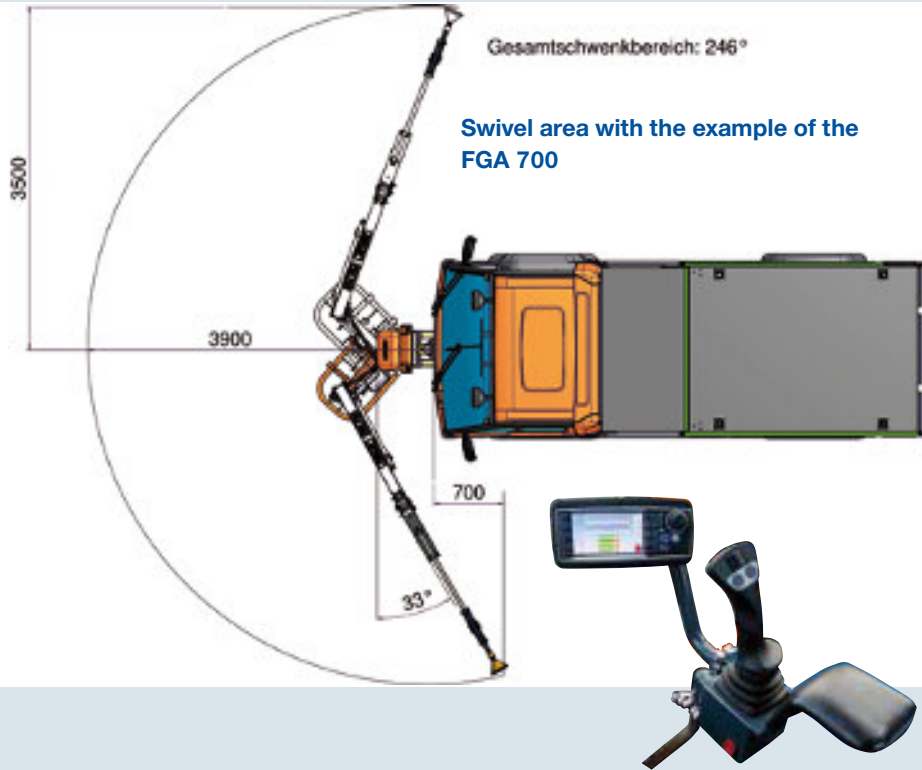
With low-pressure assembly for irrigating gardens and green areas



- 12V electric drive with a proportional CAN-BUS control and colour display
- Main and auxiliary bracket in stainless steel
- Maximum range of shower head: 5.0m / 7.0m / 10.0m / 12.0m + water throw radius
- Innovative pivoting movement of the watering arm shower head is swung back to the right and left of the cab door



- In the transport position no visual field restriction



- For each vehicle type there is a suitable solution



Watering arm FGA 700

Alternating use with the additional hot water spray nozzle



The storage cart is standard.

Watering arm FGA 1000



Watering arm FGA 700 for Pick Up

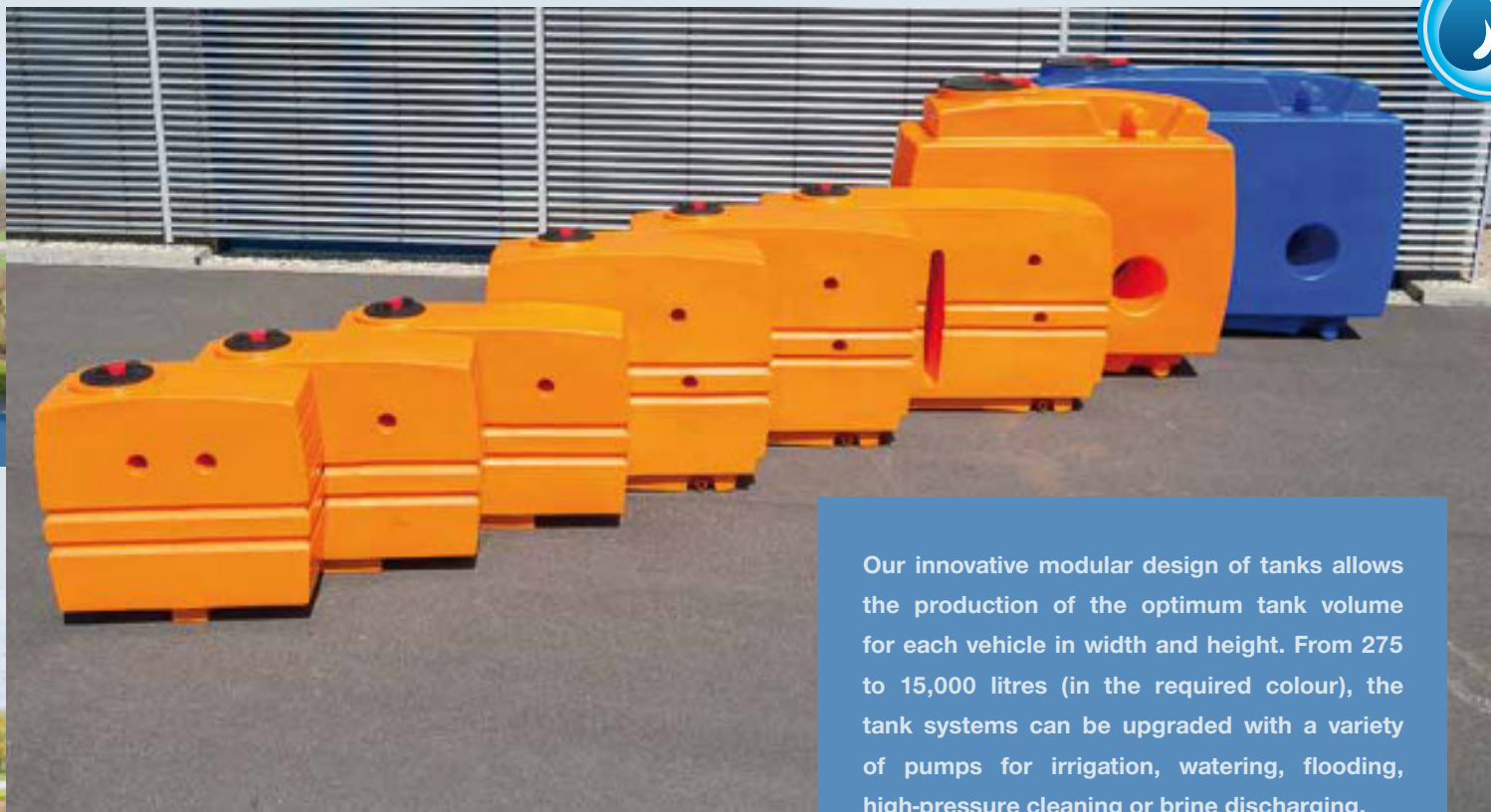


Watering arm FGA 500 | FGA 700



Hydraulic drive, direct control from the vehicle

Tank systems FTS 275 to FTS 15000



Our innovative modular design of tanks allows the production of the optimum tank volume for each vehicle in width and height. From 275 to 15,000 litres (in the required colour), the tank systems can be upgraded with a variety of pumps for irrigation, watering, flooding, high-pressure cleaning or brine discharging.

Tank system FTS in various Versions



FTS 1800–1,800 litres

FTS 2000–2,000 litres

FTS 3400–3,400 litres



Low-pressure and High-pressure versions

Low-pressure version

Low-pressure version with: hydraulically driven hose reel

Tank system FTS – various versions

WASHING bar FSB 1300 | 1500 | 1800



FTS 975 with a petrol engine pick-ups



FTS 975 with a petrol engine for vans



FTS 650 with high-pressure system for narrow track vehicles



Washing bar FSB 1300



FTS 650 with a medium-pressure system



FTS 1200 with a medium-pressure system



FTS 975 with a high-pressure system



Telescoping washing bar FSB 1500



FTS 1800 with a low-pressure pump trailer mounted



FTS 1800 with a high- and low-pressure pump



FTS 2000 with a low-pressure system for wheel loaders



Washing bar FSB 1800



FTS 2700 with a low-pressure system on a roll-off system



FTS 10000 with low- and high-pressure (design concept)



FTS 3400 with an electrical low-pressure pump



Washing bar FSB 1800





Front sweeping machine FFK 1310 | 1610 | 1810

Rotary power sweeper with and without a collecting container



- Working widths without a side brush: 1,300, 1,600 and 1,800mm
- Automatic adjustment of the distance between the container opening and the sweeper
- Intelligent side brush access and parking stands
- Optional water sprinkling device
- Summer and winter brush options
- Integrated drive motor

Leaf and litter collector FLA 1301

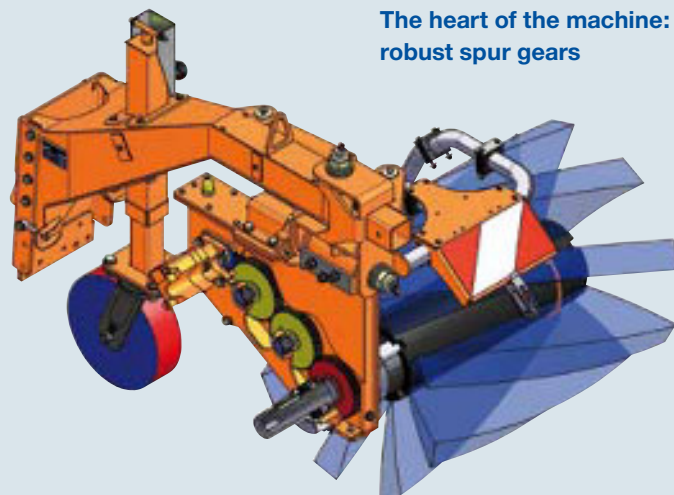


- With a brush kit for collecting leaves on solid ground
- 1.30m of working width
- 0.50m of lateral displacement
- With an impeller blower and branch shredder

Front sweeping machine with a Central drive FKM 1300 | 1500



- Narrow slung spur gears in an oil bath
- Torque to the brush shaft of 650Nm
- Brush diameter of 600mm
- Flexible plastic cover
- Polyurethane heavy duty wheel ø 250mm



Cross-sectional view
The heart of the machine:
robust spur gears

The FLA 1301 leaves and rubbish collector is a novel solution for removing foliage and rubbish on water-soaked paths and lawns. The collection of material is done mechanically by means of a tined harrow shaft. In this way, sand, gravel and stone material remain untouched.

Leaves, small branches and waste are, however, picked up. They are then thrown into a trough, conveyed via a worm to a cast turbine and, finally, shredded by the blades. The spring-tine harrow shaft can be exchanged for a brush shaft or a tine shaft with plastic tines.



Tine harrow shaft for removing
leaves and waste on sand,
gravel and meadow areas

Front sweeping machine with a Central drive FKM 1210 | 1310 | 1410



Cross-sectional view
The heart of the machine:
two drive motors

- Brush diameter of 550mm
- Adjustable robust costor wheels
- Two integrated drive motors producing 220Nm
- Stainless steel drive casing
- Flexible plastic cover
- Swivels centrally (not exceeding the vehicle's contours)



Cleaning water-soaked paths



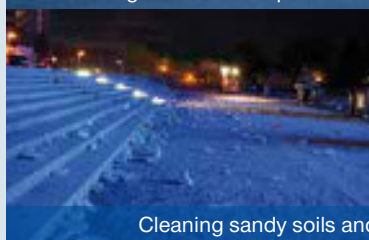
Cleaning lawns



Attachment without a turbine



Intake of hard packed paper



Cleaning sandy soils and lawns after major events



FLA 1301 with a hand-held suction hose



Emptying in a roll-off container



FLA 1301 with a Maytec container



FLA 1301 with a side brush



FLA 1301 with a bulk waste flap

Leaf and litter collector FLA 1250



- Separates leaves and debris from sand, grit etc.
- Cleaning and de-thatching the lawn
- The leaves are picked up, shredded and discharged through a central opening.



With interchangeable rotary brush and side brush for solid ground

Leaves and litter vacuum FLAS 1210



- For removing leaves and rubbish on fixed routes, streets and squares and lawns
- With an optional sliding frame, the suction nozzle can slide left/right 1.25m



With a plastic or spring-tine harrow shaft for lawns and water-soaked surfaces

Leaves and litter vacuum FLAS 1210 with a lightweight attachment FLBA 3000 | 4000 | 4500



- To be mounted on a three-way tipper
- Capacity depending on a flatbed size of up to 8m³
- Quickly and easily installed
- Drop-side frame featuring a sturdy truck tarpaulin

Collection container FSC 3000 | FSC 3500



- Hydraulically opening rear door
- Container volume: 3.00m³ / 3.50m³
- Special filter elements ensure the reliable discharge of coarse dirt particles

Suction container FSC 3001 | FSC 3501



With a powerful integrated turbine and a hand-held suction hose, even the most difficult places to access can be cleaned of debris and leaves. The filter elements can be cleaned by means of a hose or a pressure washer.



Easy to replace filter elements (easy to clean)



Delivery hose connectors with a separation point for tipping

Weed brush FWK 900

- Brush diameter of 700/900mm
- Innovative swivel system – over 180°
- The operator can use the FMC to set the swivel angle
- Depending on the type of ground, the operator can use the FMC to set the load and discharge of the brush head
- Automatic parking system



Snowplough FRS 1404 – 2204 Standard

A very stable, oversized plough blade carrier with a cylinder and collision protection with 2 springs.



The FIEDLER® Long-life plastic scraper has a high durability and abrasion resistance to the harshest conditions.



- 0.80m of plough blade height
- Swivel bearings, can compensate up to a 17° roadway inclination

By its rounded shape, the FRS 2004 Standard plough blade has all the properties allowing the most efficient clearing of wet or powdery snow or snow drifts. The snow is always rotated laterally through the plough's special blade form.

Weed brush FWK 900



Weed brush WK 701



Snowplough FRS 1504 – 2404 Standard



- The plough blade is designed for the most demanding use
- Its blade angle is adjustable depending on the scraper
- Two swivel cylinders
- All joints are accessible for lubrication and fitted in bronze bushings
- The turntable pressure plate is made of Hardox
- It can swivel 32° left/right



Weed brush WK 701



- Lateral displacement of 1.25m
- Hydraulic swiveling
- Controlled via a separate control panel

Weed brush WK 702



- Swishing function via 2 hydraulic cylinders
- Hydraulic swiveling
- Controlled via the vehicle's hydraulics

Spring flap snowplough FRS 1820 – 2620



- Designed for maximum loads
- Its high moulded blade guarantees a very good dropping out of the snow
- 830 mm of plough blade height with 2 pivoting cylinders
- Scraper blades: Rubber / plastic / steel (Hardox) / rubber-corundum





Spring flap snowplough FRS 1310 – 2010

The FRS 1310 – 2010 spring blade is designed for small vehicles and features 2D Plus ground following, a very short front end and a blade height of 630mm.



Vario snowplough FKP 1310 | 1510 | 1710 | 1910



- Highly contoured plough blade
- Centrally closed clearing bar
- Cardanic means like universal joint plough blade control with a low power flow

COULTER POSITIONS



Swivels to the right as a lateral plough Swivels to the left as a lateral plough Swivels to a V – plough Swivels to a wedge plough

Vario snowplough FKP 1205 | 1305 | 1505 | 1705



- Highly contoured, slanted plough blade
- Centrally closed clearing bar
- Spring dampers



COULTER POSITIONS



Right-hand lateral plough Left-hand lateral plough V – plough Wedge plough

EXAMPLES OF USE



Blade width of 1,300mm



Blade width of 1,500mm



Blade width of 2,000mm

Vario snow plough Comfort controls



- The joystick is ergonomically located in the armrest.
- Two blades are simultaneously operated
- The controls function via the FMC or 3D mode.

Centrifugal spreader FSH 30

The FSH 30 centrifugal spreader has a spreading width from 1.00 to 8.00m. A tarpaulin with a drop-side frame is available as an option. The centrifugal spreader is mounted quickly and easily on the platform or in the rear three-point.



FSH 30 for the rear three-point



FSH with bag filling



Brine spraying system FSSA 550 – 15000



- A tank capacity of 550 litres to 15,000 litres according to the vehicle size
- The control occurs via the FMC by switching between 3, 4 or 5 spraying widths as well as jet nozzles
- The level indicator with range information according to the speed of the vehicle
- It can be used in the summer as a watering or washing system

Drop spreader FWS 200 – 350



Spreading width of 1.40m



Spreading width of 1.20m

The FWS 200 to 350 roller spreaders are distinguished by their perfect spreading patterns. Their cams are interchangeable.

Optionally, a tarpaulin with a drop-side frame as well as a digital spread rate setting control, fully distance - dependent, and in a closed loop are also available.

BRINE SPRAYING SYSTEMS AVAILABLE IN DIFFERENT SIZES



FSSA 550



FSSA 650



FSSA 975



FSSA 1800



FWS 200



FWS 350 with collision protection



Filling via a loading platform

Combined spreader FWS 200 – 350



- Selectively spreading as a drop spreader or as a disc spreader
- Disc spreading with from 1.00 to 8.00m
- Uses spreading rollers of 0.90 / 1.00 / 1.20 / 1.40m
- Options:
 - The control panel featuring the spreading volume and the width adjustment (fully distance-dependent)
 - Tarpaulin with a drop-side frame



FWS 200 – Filling via a loading platform



FWS 200



FWS 350 with LED flash lights



FSS 1100 on a skip loader



FSS 600



FSS 250



FSS 2000 on a ball-change system



FSS 400



FSS 330

Flat silo spreader FSS 250 – 2000

- Combines the benefits of a belt and an auger spreader.
- “STEP by STEP-System” – no tunneling
- Flat design for the largest capacity in the smallest possible space



A stainless steel insert made of V4A protects the spreader wall against corrosion and wear.

Wet salt spreader FFSS 800 – 2000



The FFSS 1600 wet salt spreader



- combines the benefits of a belt and an auger spreader.
- “STEP by STEP-System” – no tunneling
- 1 tank for FS30 wet salt or, optionally, 2–3 additional tanks for FS 70 or FS 100



Controls available

For the rear-mounted spreader FSH 30 / combined spreader FWS 200-350 / flat silo spreader FSS 250 – 2000 and wet salt spreader FFSS 800 – 2000

FIEDLER® Semi-automatic Controls (with Manual setting)



- This spreading assembly switches on at approx. 1km/h and turns off at standstill.

FIEDLER® Remote control (CAN-BUS)



- Fully automatic, speed-dependent control (distance-dependent)
- On/off switch
- Stand emptying switch
- Working lights switch
- Working lights switch
- Continuously variable spreading volume and width adjustment
- Level sensor indicator (option)

FIEDLER® FMC Multimatic Control – digital multifunction display



- A 4.3" colour display based on transfective technology (excellent readability even in direct sunlight)
- Hassle-free operation even in complete darkness, thanks to the illuminated display and keypad
- Adjustable brightness (on both indicator and keyboard)
- Push button control and multi-function switch
- Prepared for a camera connection
- Level sensor indicator (option) Including touchscreen, front USB 2.0 for data transfer, GPS, rear view camera

FIEDLER® Streumatic Basic Package – flat silo spreading assembly

- Fully automatic speed-dependent spreading volume control (closed loop) and spreading width – CAN-BUS control
- Programmable control panel (e.g. short 4-fold grit spreader)
- Optical and acoustic level indicator via the grit container-located feeder
- Spreading medium-specific setting of the spreading volume and width in the calibration mode

FIEDLER® FMC with a 3D mouse

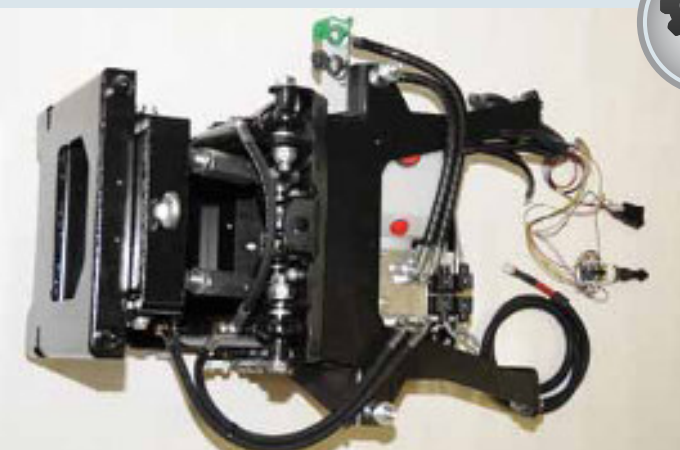


- Controls for each respective spreading assembly
- Control for e.g. vario snow plough using the special vario snow plough Comfort Controls supported by a 3D mouse
- Automatic plough blade and weight transfer are also available
- This unit is intended for summer use in combination with a front extension arm, watering arm, weed brush, etc.; an additional control panel is therefore unnecessary

All-purpose Front power lift



For vehicles with hydraulics



with elektrohydraulics for vehicles with no hydraulics

Options: Weight transfer setting

Electronic ground pressure control – innovative technology for every control field

- Can be fitted to all vehicles with a rigid plate or solid screw points
- The front mounting plate can be adjusted individually
- The front power lift is adapted to receive an FFA 400 front extension arm
- Tilt adjustment via 2 adjustable upper links
- Security for road transportation with a mounted device
- Lifting capacity: 1.5t
- Lifting height: 380mm
- Weight: 91kg

Locking button with a press function



- Digital CAN-BUS ground pressure control – steps 1–9
- Reduces wear on the scraper blades



For installation on any tractor



For installation on DIN plates



For installation on used and new vehicles



For installation on trams

Lamp holder for Retrofitting



With an LED flash beacon



Lamp holders for installation on the roof

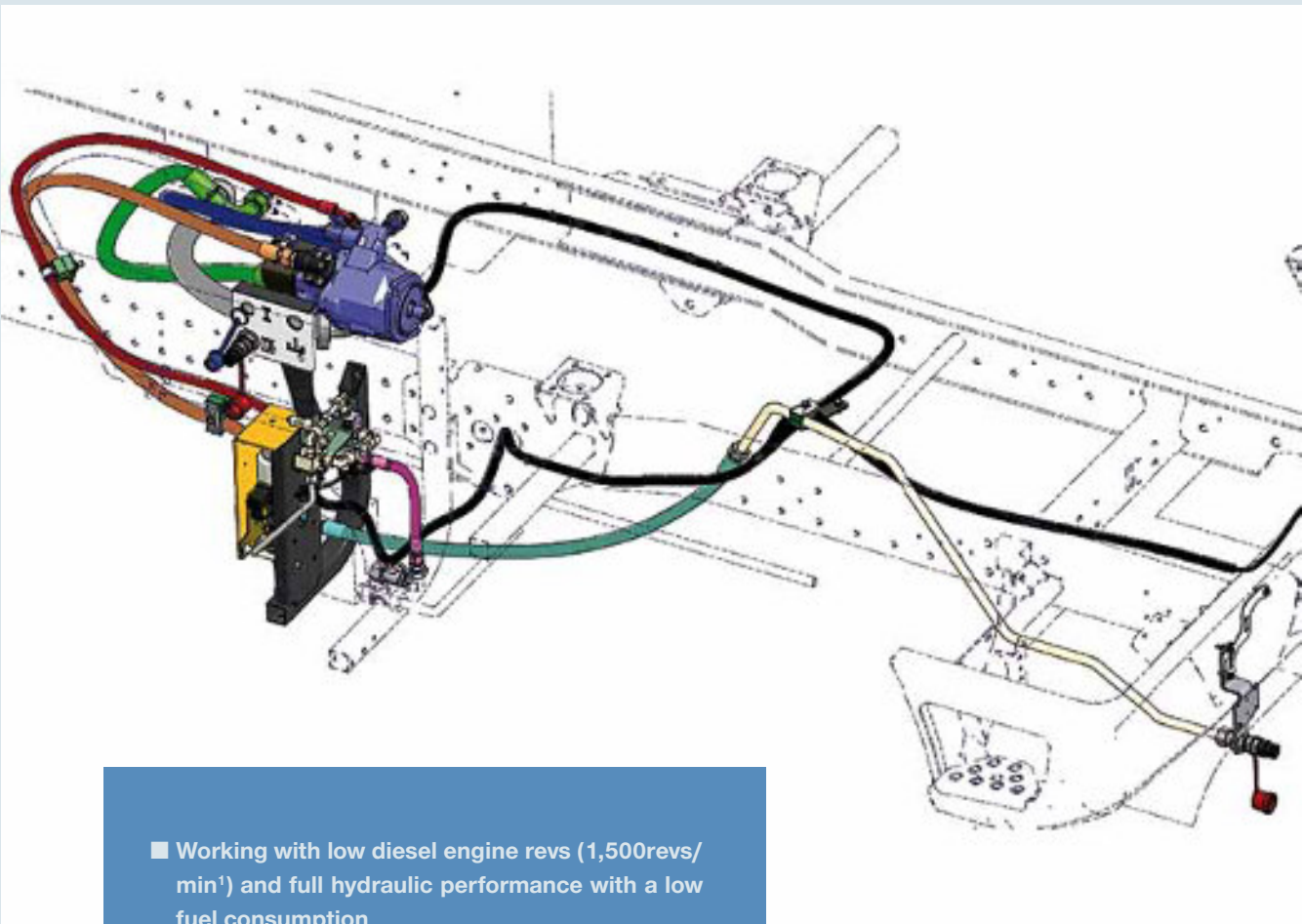


Lamp holders for installation on the rear attachment





Twin-Circuit High-performance hydraulics ECOBOOST



- Working with low diesel engine revs (1,500revs/min¹) and full hydraulic performance with a low fuel consumption
- Two separate working circuits and, thus, no interference
- Circuit I for cylinder movement with a flow of up to 35l /min¹ at 200bar
- Circuit II (variable axial piston displacement pump) with a flow of 0-75l/min¹ at 270bar – digitally adjustable on the in-cab display in 5-litre steps
- Digital display, hydraulic oil temperature monitoring

Lamp holder

For vehicle security during maintenance work



- Easily fitted on a three-way tipper
- The "Mowing" lettering can be replaced by a magnetic film to "Winter Service" and "Road Service"

Fan

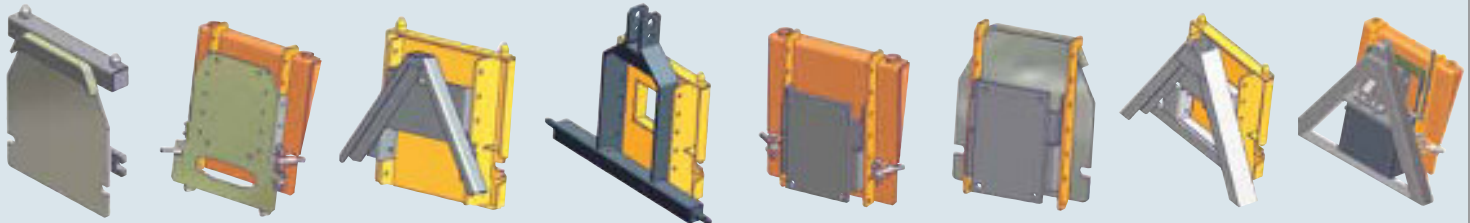
For street cleaning during mowing work



- The nozzle can be pivoted left and right.
- A powerful turbine is switched on hydraulically
- Easily fitted on a tipper

Adapter plates

ADAPTER PLATES FOR THE INSTALLATION OF DEVICES ON NARROW TRACK VEHICLES



M26/FUMO
on TREMO

UX 100 on
M26/FUMO

M26/FUMO
on a municipal
triangle

M26/FUMO
on a trailer
triangle cat. I

Ladog on
M26/FUMO

Ladog on
TREMO

M26/FUMO
on a tractor
triangle cat. I/II

Boki on
M26/FUMO

Reinforced lower link

For retrofitting on Multicar FUMO / M27 / M31 for Heavy Winter Service and for a plough blade width of 2.40m

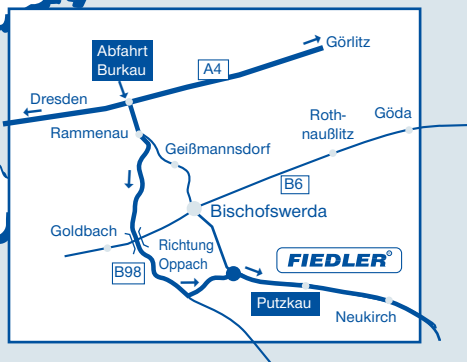


Powerpack for tractors



Power Pack with a control block and control panel for driving and operating a front extension arm on tractors without power hydraulics, hydraulic controls or front PTO





**Your reliable partner for mowing technology,
water and sweeping technologies,
weed eradication,
leaves and waste disposal,
winter service and special solutions.**



FIEDLER®

Dresdner Straße 76 c · 01877 Schmölln-Putzkau, Germany

☎ +49 (0) 3594 - 74 58 00 · Fax +49 (0) 3594 - 74 58 0 44

e-mail: info@fiedler-gmbh.com

www.fiedler-maschinenbau.de

The manufacturer explicitly reserves the possibility to implement technical, design and functional changes at any time without prior notice. Figures, data and designations in this document are merely informational and cannot be considered binding.